

WQ Willsher & Quick

Ultima – The ultimate rack



Willsher & Quick (WQ) is one of the largest technical enclosures manufacturer with over 40 years experience on producing standard and customized cabinets for **Datacom, Telecom, Computer** and **Electrical** applications. Our customers include Siemens, GEC , Motorola, AT&T, Racal, IBM, ICL, Digital, Unisys and etc. multinational corporations. Our manufacturing plants are located all over the world including UK, Australia, USA, and especially the low production cost countries – India and Thailand.

WQ is ..**Designing the Future**

WQ Willsher & Quick (Hong Kong) Ltd.

I. Ultima 600 Series

Ultima 600 Series is our best selling standard multi functions racks in HK and worldwide. All 600 Series common products (especially 42U/39U/27U racks) are available ex-stock in HK in *large quantity*. Prompt delivery can be arranged within 1 week or even in 24-hour special service.

(Remark : All Ultima 600 Series racks are designed as the Heavy-duty Multi Purposes racks. It can be serve as Servers rack, Cabling rack and even for very heary equipment storage rack. All frameworks are ensure the very strong & very rigid structure for maximum loading in 750kg static load.)

II. CPQ Version Series for “COMPAQ”, “HP” Rackmount Server

with the increasing popularity of Rackmount Server, we will introduce our specially modified 930mm Deep 600 Series racks for this specific application in Dec 97. This series of racks provide the special Vented Front & Rear Door to adopt with the ventilation requirement of these servers.

III. Ultima 800 / Open / Wall Mounted / Consoles Series and Custom Made Enclosures

Our Ultima Series also includes our standard 800 Full Width racks, Open Racks, Wall Mounted Racks, Consoles and allows modifications or custom made for some special requirements.

WQ Hong Kong Major Customers List

- a. Bank & Financial Companies
 - Bank of America
 - Bank of China, Bank of China Group
 - Bank of East Asia
 - Sumitomo Bank
 - Hang Seng Bank
 - Bank Peribas
 - Credit Suisse First Boston
 - Merrill Lynch Int'l Incorp
 - Croby Asset Management
 - Bear Stearns Asia Ltd.
 - Nomura

- b. Government Units & Public Utilities
 - Technical Services Division
 - ITSD
 - HK Police
 - HK Monetary Authority
 - Airport Authority
 - Housing Authority
 - China Light & Power
 - Hong Kong Electric
 - MTRC

- c. Large Corporations
 - Motorola Asia Pacific
 - IBM China HK Corp
 - Newbridge Network Asia
 - Sun Microsystems of California
 - Digital Equipment Asia
 - Global One (Sprint International)
 - Hutchison Telecom
 - New T & T
 - Hong Kong Telecom
 - Hong Kong Telecom CSL
 - Hong Kong Securities & Clearing
 - Hong Kong Stock Exchange
 - Reuters Asia, Reuters TV
 - Star TV
 - Cable TV
 - Henderson Land & Development
 - Cathay Pacific
 - DHL International

WQ Hong Kong Latest Large Scale Projects

1. Merrill Lynch Int'l Incorporated.

Project : New Data Centre
Location : 22/F, Asia Pacific Financial Tower, Citibank Plaza,
Central
**Qty. of Rack : 74 units of WQ Ultima 600 Series 42U 930mm Deep
14 units of WQ Ultima 800 Series 42U 930mm Deep**
Status : Completed in Dec. 97

2. Reuters Asia Ltd.

Project : Exchange Centre Relocation
Location : 1/F, Yuen Chau Kok Exchange, HKT
**Qty. of Rack : 210 units of WQ Ultima 600 Series 42U 800mm Deep
160 units of WQ Ultima 600 Series 42U 930mm Deep**
Status : Started delivery in Feb. 98
Will be completed in Sept. 98

3. Credit Suisse First Boston

Project : New Data Centre
Location : 14/F, Exchange Square III, Central
**Qty. of Racks : 50 units of WQ Ultima 600 Series 42U 800mm Deep
5 units of WQ Ultima 600 Series 45U 800mm Deep
5 units of WQ Ultima 800 Series 42U 800mm Deep**
Status : Completed in August 97

Ultima Rack - Standard Products ...

Ultima 600 Series & 800 Series

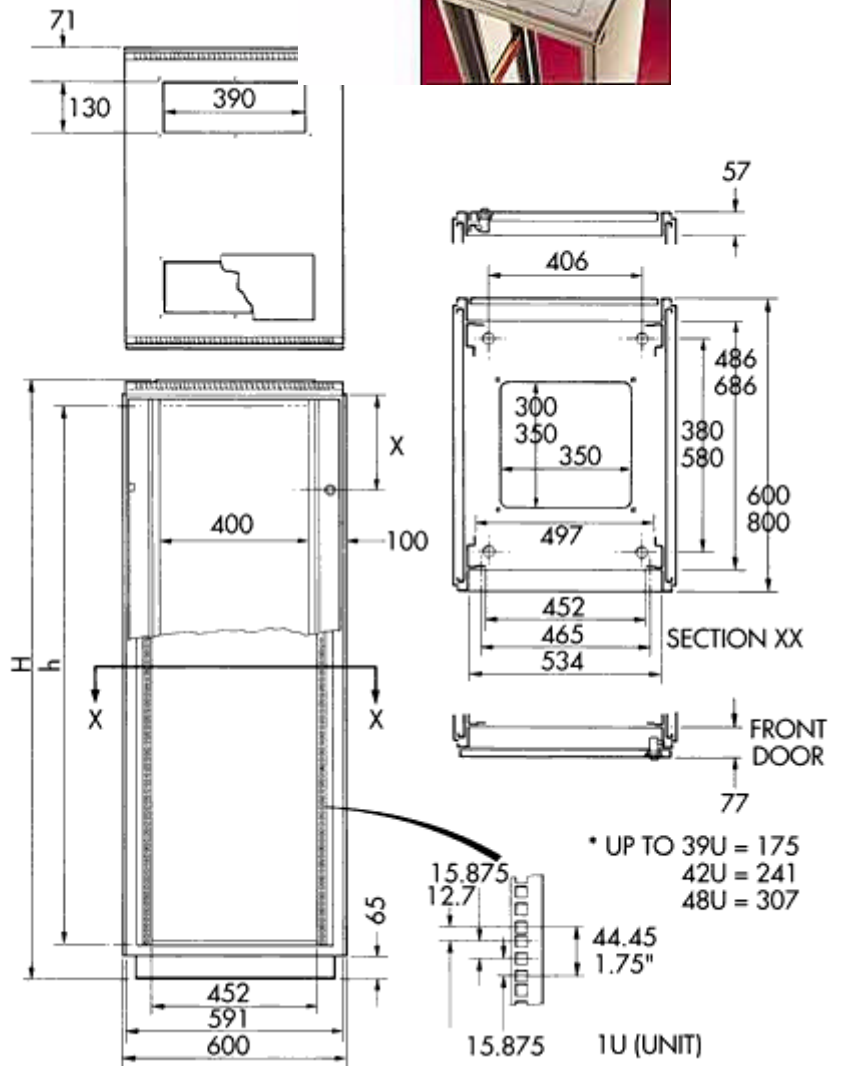
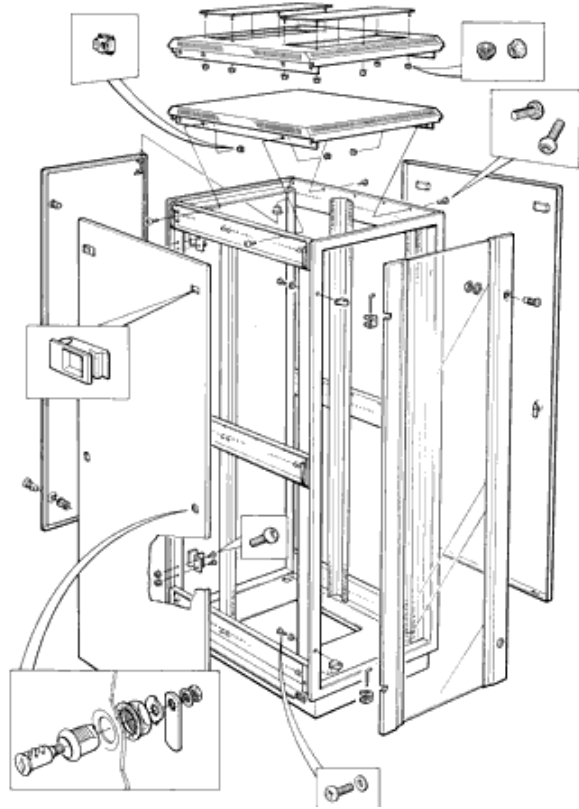


- 12U to 48U in 12 heights (600 Series)
- 39U, 42U & 45U in 3 height (800 Series)
- 600mm wide (600 Series)
- 800mm wide (800 Series)
- 600mm or 800mm deep
- 2.0mm thick steel framework (**750kg static load**)
- Full framed glass front door
- Full height adjustable Vertical Mtg Channel x 4
- Full height Cable Tray (pair)
- Roof Mounted Fan Unit (3 fans)
- Heavy-duty plinth with 3 sides cable entry
- All doors / panels with locks for total security
- Castor & jacking feet set
- Extensive range of accessories
- Flat pack option

Material and Finish

Description	Material	Finish
Front & Rear Frame	2.0mm Steel	Mid Grey Powder Painted
19" Mounting Angles	2.0mm Steel	
Vented Top	1.5mm Steel	
Plinth	2.0mm Steel	
Horizontal Channels	1.5mm Steel	Zinc Plated and Passivated
Framed Front Door	1.5mm Steel	Light Grey Powder Painted
Steel Rear Door	1.5mm Steel	
Side Panels	1.5mm Steel	

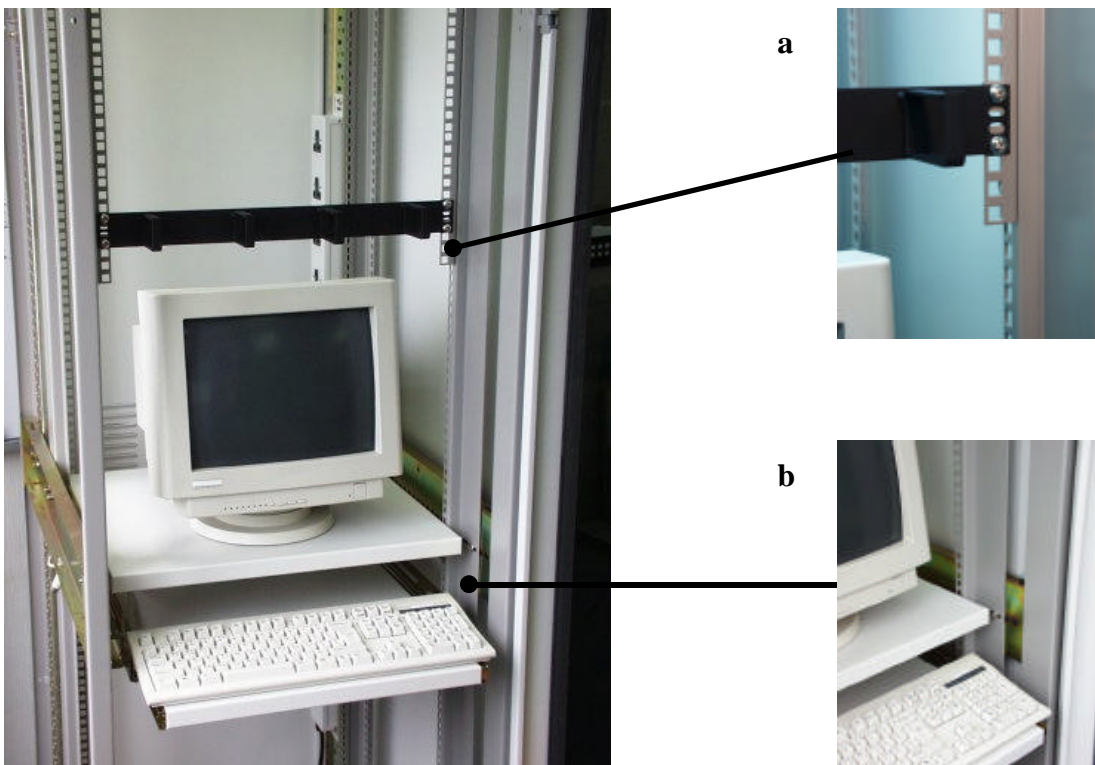
Ultima Rack - Ultima 600 Series Dimension Diagram



New

Unique Flexible Design

1. Ultima 600 Series New Accessories
 - **Direct Pull Out** of standard 101 keyboard with standard sliding shelves
 - Provide **max. 495mm** width for Server or other equipment storage
 - Remains the 19" mounting standard for cabling & networking equipment
 - Remains the Side Mounting Standard for standard fixed & sliding shelves
 - 19" mounting brackets can be applied on any part of **Side Mounting Channel**



a.) Add on **19" Mounting Bracket** (top left mini photo)

Flexible on Part Height 19" mounting

b.) Full height **Side Mounting Channel** (for Shelves) (bottom left mini photo)

Maximum space (495mm) for non 19" equipment storage (e.g. 101-keyboard)

New

Unique Flexible Design

2. WQ Ultima 600 Series CPQ Version

The **Ultima 600** rack is specially designed to accommodate the **Compaq Rackmount Server** (even **HP, Digital** rackmount server). It combines all the superior features and value of our best selling Ultima 600 Series in an enclosure that is completely compatible with **Compaq ProLiant Servers** and accessories.

Characteristics :

- Fully compatible with **Compaq ProLiant Servers & Accessories** (also with original Compaq sliding rails & cable arms)
- Fully compatible with standard **Ultima Accessories** (all fixed & sliding shelves, air management units, power management units, etc. can be applied)
- Additional space to afford excellent cable management (**80mm deeper** than original Compaq Rack)
- Single enclosure for housing both **Compaq hardware** and other **Third Parties equipment**
- Fully assembled or packed in Export Flat Pack Cartons



WQ Ultima 800 Superb Cable Management cabinet

Overview of Ultima 800 Cabinet



Front View (Door Opened)



Front View (Door Closed)

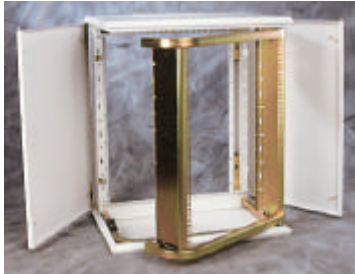


Note : It is specially designed for cable management. It comes with 4 x 100mm wide full height adj. Cable management channels to allow very tidy cabling down the sides as well as front to rear. A big truck of cables (approx. 300 to 400 pcs.) can be accommodated & well managed by the channels for better appearance. Frame Glass Door can be chosen to make all cables inside the channels will be hidden on viewing from the front.

Closer View of Cable Management Channels



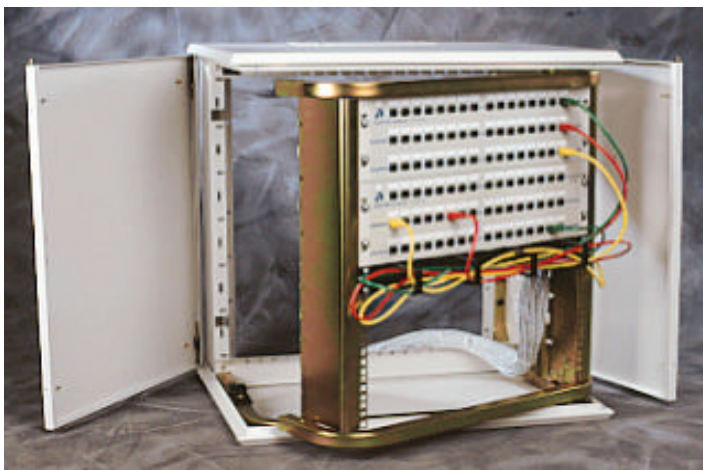
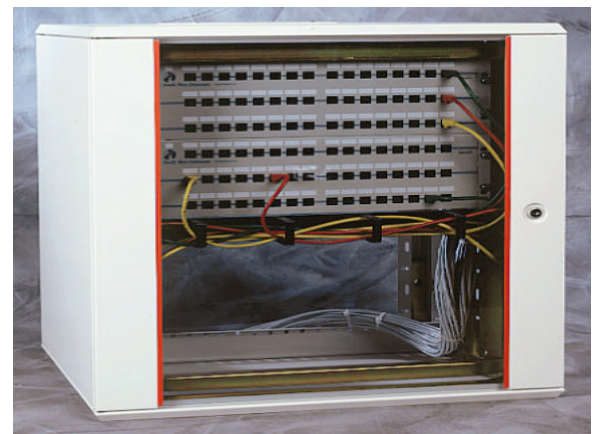
Wall Mounting Networking Enclosures



- Fast, efficient installation utilising skeleton frame structure
- Five height configurations : 6U-9U-12U-15U & 21U
- Cable access through special gland plates allowing installation over previously installed cables
- Easy cabling with no obstructions
- Adjustable 19" mounting angles
- Quick release side panels (fans unit optional)
- Quick release, lockable glazed front door giving single key security

Options :

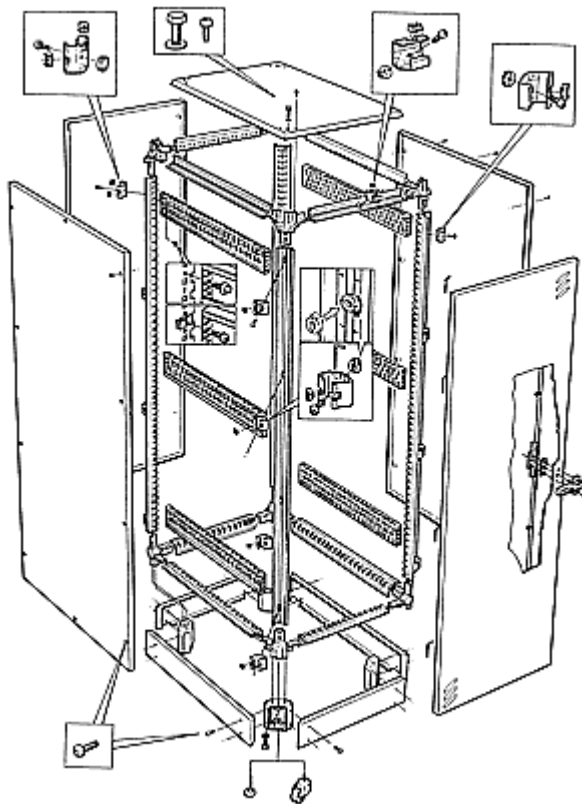
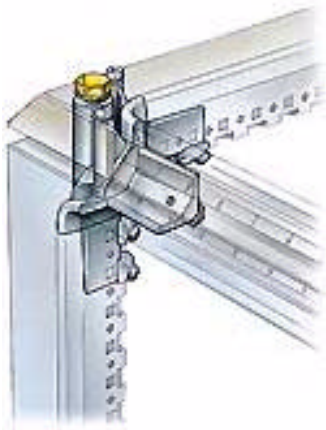
- 180 degree opening swing frame with adjustable angles
- Right & left hand hinge available
- Convection through flow cooling
- Force air cooling system
- ETSI Mounting rails
- Rear Panel (optional)
- Mountings for horizontal or vertical power distribution units



Ultima ‘E Class’

Ultima ‘E Class’ is a new generation of enclosure, providing a high integrity environmental enclosure for industrial as well as office environments

‘E Class’ features **IP55** or **IP66** sealing and an **EMC/IP55** option. It has also passed severe shock and vibration tests.



Features :

- 1.8m, 2.0m and 2.2m heights
- 600mm and 800mm deep
- Custom versions available
- 600mm, 800mm and 1200mm widths available as standard
- 19” angles
- Plinth
- Electrical Panels
- Glazed Doors
- Shelves
- Castors
- Jacking Feet
- Lifting eyes
- Gland Plates
- Air Management

WQ Ultima E-Class Lift Test

Test carried out by Mr. N Barry
United Crane Services
(Mark Priest Ltd.) Bristol

Supervised by Mr. C M Wright
Willsher & Quick Ltd.

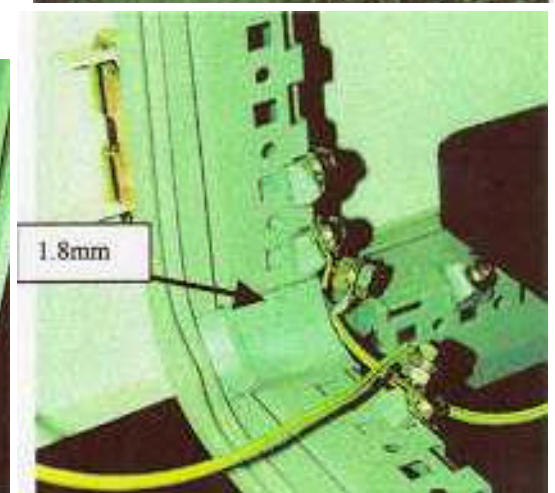
Enclosure Tested 2000x600x600 with side panels,
Top panel and front & rear doors.

Method

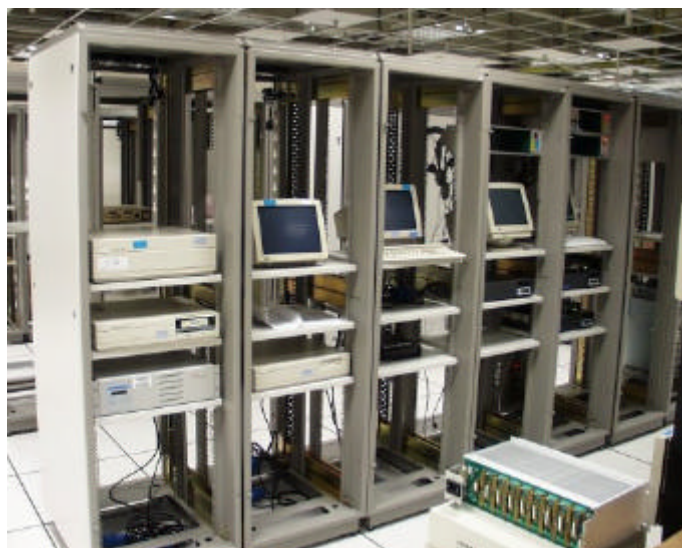
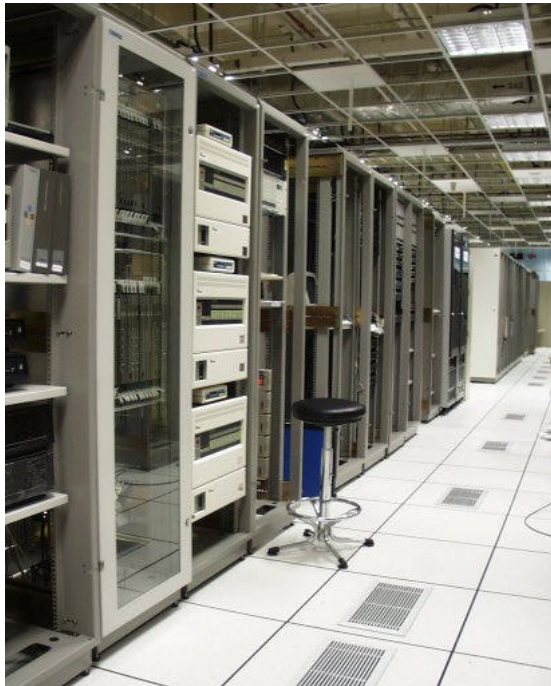
A sling was attached to a tubular fixture, which was placed directly onto the bottom frame members of the enclosure. A sling was then attached to the fixture and to a load of 1,400 kg. The enclosure was lifted 40mm off the ground and moved 5 metres. This method was repeated with the load increasing to 2,400 kg in steps of 100 kg.

Results

1,400 to 2,000 kg no deformation observed.
2,200 kg very slight deformation at bottom front joint.
2,400 kg slight deformation at front bottom joint with a gap of 1.8mm between the bottom edge of the vertical frame and the casting.



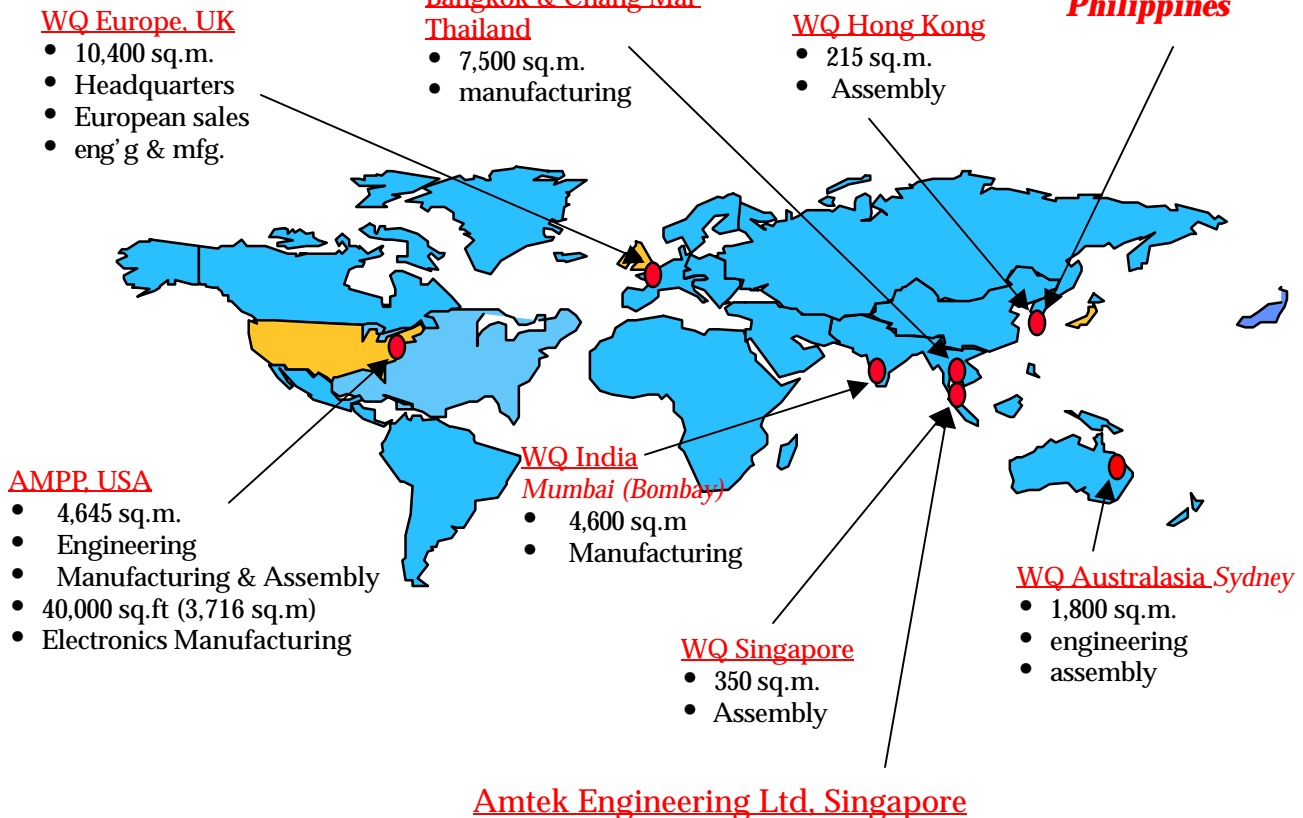
References in Datacom & Telecom Application



WQ International

**Distributors Greece, Holland, USA,
Bahrain, Dubai, Belgium, Russia,
Germany, Portugal, Spain & Ireland.**

**Distributors in:
Thailand, Indonesia,
China, Taiwan,
Japan, Brunei,
Philippines**



Every effort has been made to ensure that information in this product overview is correct. WQ reserve the right to modify product specifications without prior notice and assume no responsibility for any error which may appear in this publication.